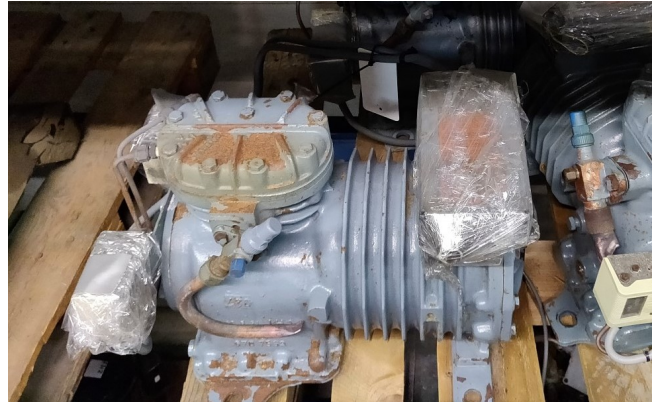


# DWM DLFE 301 EWL

## Specifications

Marque	DWM
Le type	DLFE 301 EWL
Réfrigérant	Freon
kW at 0°C/+40°C	10,6
kW at -5°C/+40°C	8,8
kW at -10°C/+40°C	7,2
kW at -20°C/+40°C	4,6
kW at -30°C/+40°C	2,6
Remarques	R404a - R22 or other freon types
Tailles	450x350x300 mm (LxWxH)
Stock	1



## Description

### Used DWM DLFE 301 EWL

Used DWM DLFE 301 EWL  
Compressor(s/n:0660544) / Max.Oper  
Press.H/L:25/20,5 bar / 3~ / 50Hz /  
1450 RPM / 12,9 m3/h // Block.  
Rotorstr: 83,0-91,0

